



# Professional Development with Classcraft



Classcraft is an Engagement Management System that uses gaming principles to address student motivation. By blending students' physical and virtual learning, the program reframes their progress in school as a game they play together. Using collaboration and play to build more empathetic and fun classroom culture, the game rewires existing social dynamics and facilitates a supportive environment where students thrive.

Our expert PD team will coach your teachers on best practices for using Classcraft. Educators will rethink and refine their teaching approach to achieve targeted outcomes in the areas of school climate, classroom management, social emotional learning, and personalized learning.



## PD with a purpose

Classcraft's professional development sessions are designed to:



### **Save you time.**

Ensure successful implementation and sustainability of Classcraft in your school or district.



### **Save you money.**

Classcraft's Analytics on student learning and growth help you most effectively select classroom interventions and resources.



### **Empower your staff.**

User-friendly classroom management tools make even the best teachers more effective.



# Create and customize your PD

On-site and remote PD sessions provide a solid foundation for implementing Classcraft. Learning tracks are customized to meet your school's and educators' specific needs around the high-impact outcomes that matter to you.

**Essentials:** We recommend that all districts, schools, and teachers participate in the Essentials foundational PD sessions to ensure successful implementation and sustainability.

- ✓ **Classcraft 101: Platform Intro & Approach**
- ✓ **Classroom/Behavior Management**
- ✓ **Personalized Learning**
- ✓ **Classcraft Advanced: Deep Dive into Features**
- ✓ **Developing and Assessing SEL**
- ✓ **Meaningful Collaboration**
- ✓ **Gamification vs. Game-Based Learning**
- ✓ **Class and School Climate**

**A la carte:** Choose individual sessions as they appeal to you, or build a bundle of any four workshops. You may choose from the Essentials or any other available PD programs.



# Sample full day:

## Morning

Classcraft 101: Platform Intro & Approach  
Classroom/Behavior Management

## Afternoon

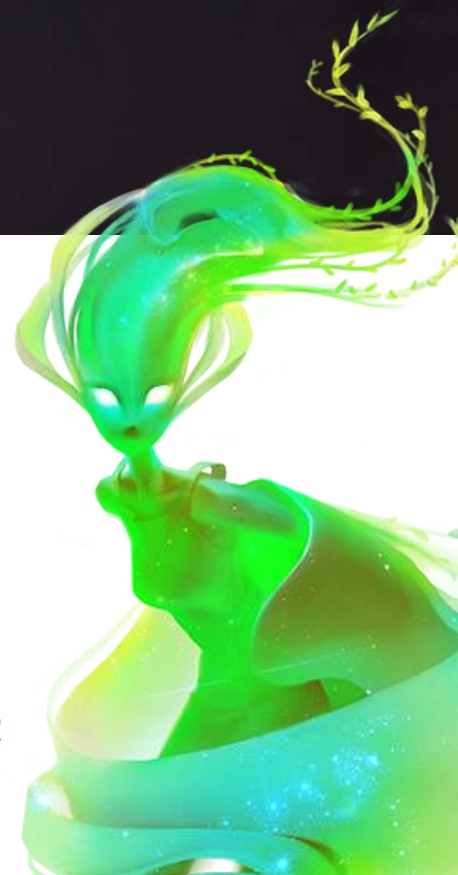
Classcraft Advanced: Deep Dive into Features  
Personalized Learning



## Scheduling your professional development

To plan your in-person PD with Classcraft, contact [pd@classcraft.com](mailto:pd@classcraft.com).  
We're available by phone and video call.

To supplement training, educators have access to our [Knowledge Center](#)  
24/7 and our live chat Monday–Friday, 10 am to 4 pm EST).



# Professional Learning at Classcraft

## Services.

---

1A.	<b>Classcraft 101: Platform Intro &amp; Approach</b>	In-Person	Virtual	\$
1B.	<b>Classroom/Behavior Management</b>	In-Person	Virtual	\$
2A.	<b>Personalized Learning</b>	In-Person	Virtual	\$
2B.	<b>Classcraft Advanced: Deep Dive into Features</b>	In-Person	Virtual	\$
3A.	<b>Developing and Assessing SEL</b>	In-Person	Virtual	\$
3B.	<b>Meaningful Collaboration</b>	In-Person	Virtual	\$
4A.	<b>Gamification vs. Game-Based Learning</b>	In-Person	Virtual	\$
4B.	<b>Class &amp; School Climate</b>	In-Person	Virtual	\$

